



19 St. Augustine Crescent, Scunthorpe

£195,000 Freehold

NO CHAIN · QUIET CUL-DE-SAC POSITION · GREAT LOCATION CLOSE TO AMENITIES · SPACIOUS LOUNGE
DINER · STYLISH FITTED KITCHEN · TWO DOUBLE BEDROOMS · ATTRACTIVE BATHROOM & SEPARATE
SHOWER ROOM · ENCLOSED & PRIVATE REAR GARDEN · AMPLE OFF ROAD PARKING & GARAGE



Bedroom 1

11' 10" x 9' 9" (3.60m x 2.98m)

Bedroom 2

12' 8" x 12' 4" (3.86m x 3.75m)

Bathroom

8' 11" x 6' 3" (2.72m x 1.90m)

Kitchen

11' 10" x 9' 9" (3.60m x 2.97m)

Dining Room

11' 10" x 9' 7" (3.60m x 2.93m)

Living Room

19' 8" x 12' 4" (6.00m x 3.75m)

Garage

18' 9" x 8' 2" (5.72m x 2.50m)



****NO CHAIN****SPACIOUS DETACHED
BUNGALOW****HIGHLY REGARDED RESIDENTIAL
LOCATION****QUIET CUL-DE-SAC POSITION****CLOSE
TO AMENITIES****

Council Tax band: C

Tenure: Freehold

EPC Energy Efficiency Rating:

EPC Environmental Impact Rating:

- NO CHAIN
- QUIET CUL-DE-SAC POSITION
- GREAT LOCATION CLOSE TO AMENITIES
- SPACIOUS LOUNGE DINER
- STYLISH FITTED KITCHEN
- TWO DOUBLE BEDROOMS
- ATTRACTIVE BATHROOM & SEPARATE SHOWER ROOM
- ENCLOSED & PRIVATE REAR GARDEN
- AMPLE OFF ROAD PARKING & GARAGE



****NO CHAIN****SPACIOUS DETACHED BUNGALOW****HIGHLY REGARDED RESIDENTIAL LOCATION****QUIET CUL-DE-SAC POSITION****CLOSE TO AMENITIES****

Council Tax band: C

Tenure: Freehold

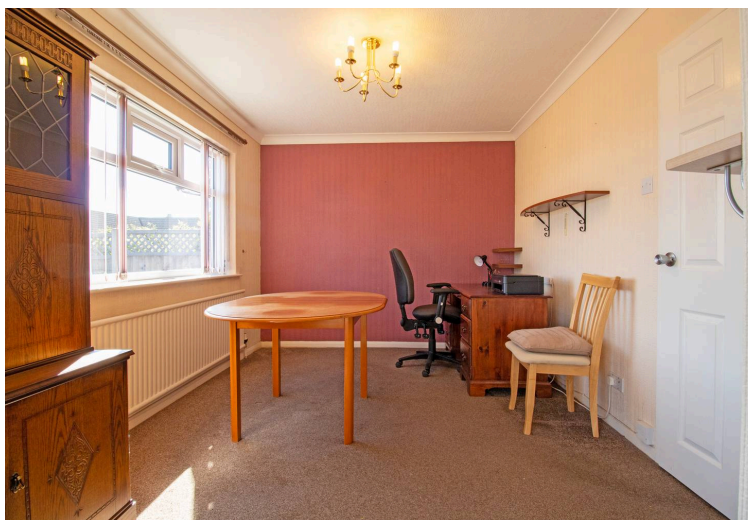
EPC Energy Efficiency Rating:

EPC Environmental Impact Rating:

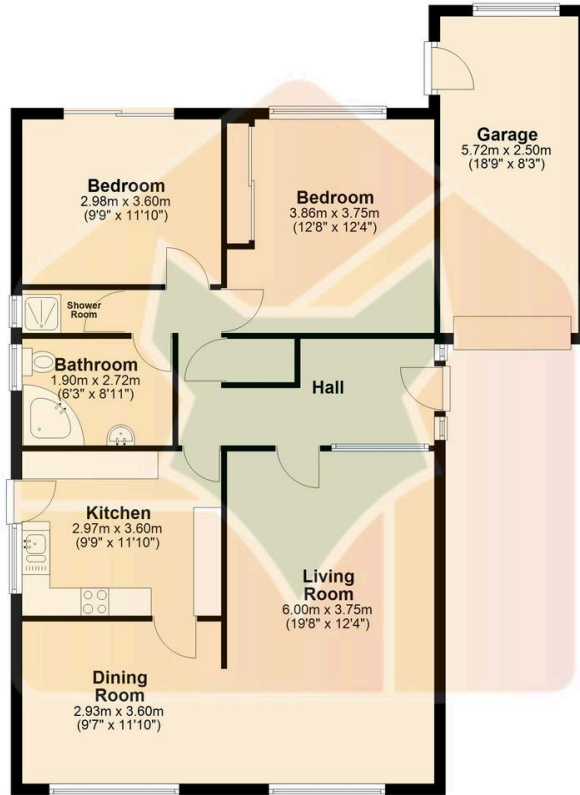
- NO CHAIN
- QUIET CUL-DE-SAC POSITION
- GREAT LOCATION CLOSE TO AMENITIES
- SPACIOUS LOUNGE DINER
- STYLISH FITTED KITCHEN
- TWO DOUBLE BEDROOMS
- ATTRACTIVE BATHROOM & SEPARATE SHOWER ROOM
- ENCLOSED & PRIVATE REAR GARDEN
- AMPLE OFF ROAD PARKING & GARAGE







Ground Floor
Approx. 103.9 sq. metres (1118.8 sq. feet)



Total area: approx. 103.9 sq. metres (1118.8 sq. feet)

You can include any text here. The text can be modified upon generating your brochure